



WWT 312 Milling Tractor

WWT 312 Milling Tractor Extends CT Reach

Enabling Wellbore Cleanout Beyond Conventional Technologies

WWT 312 Milling Tractor Extends CT Reach

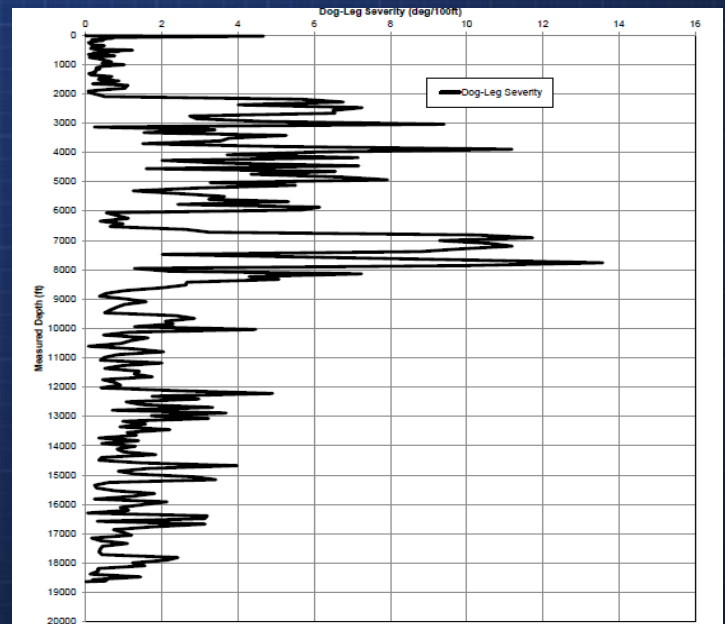
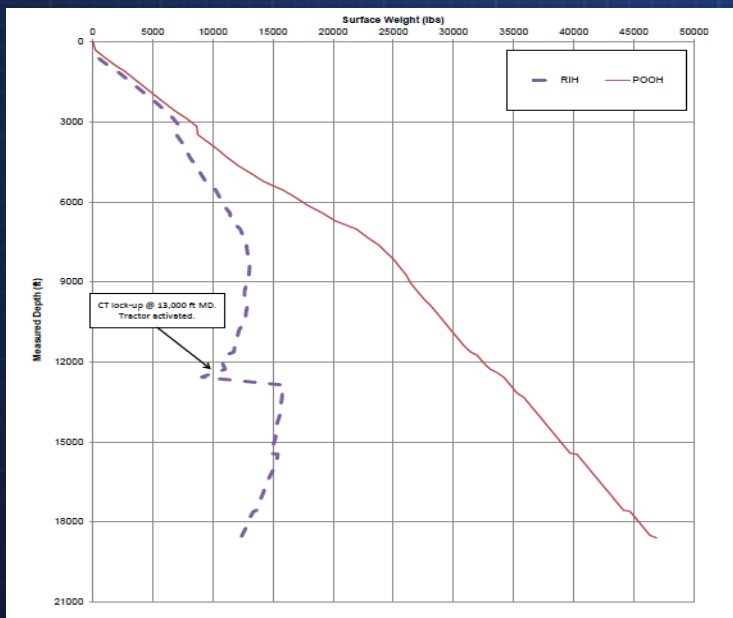
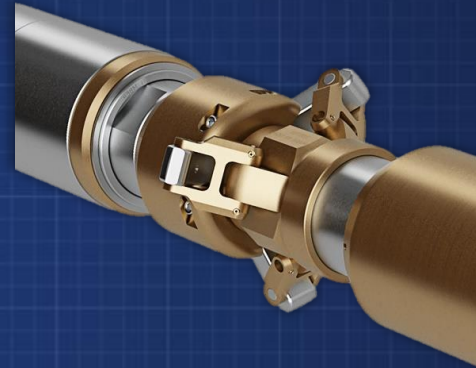
- **LOCATION:** North America
- **COMPLETION:** 5-1/2", 20 lb/ft monobore
- **OBJECTIVE:** Wellbore cleanout

Accomplishments

- CT reach was extended 1,953 ft beyond initial lockup
- No pipe-on-pipe friction reducer was requiring, resulting in reduced chemical costs to the client
- The tractor maintained a consistent 10 – 12 ft/min run in hole speed beyond lockup
- The tractor's Linked Gripper Assemblies successfully operated within 5-1/2" casing containing substantial sand and debris

Executive Summary

- As operators drill longer and longer laterals, plugs and other debris are routinely left in the toes of wells due to lack of CT reach. WWT 312 Milling Tractor applies pull force directly to the end of the CT where it's needed most. The tractor positively anchors to the wellbore providing a stable platform to mill plugs. This results in faster and more consistent plug milling times as well as reaching depths unachievable with conventional technology.



SCAN FOR MORE
INFORMATION

