

WWT FlexShoe helps 18in Casing Reach Bottom Efficiently

Operator Identifies Running Large Diameter Casing in High Inclination Wellbores as Significant Risk

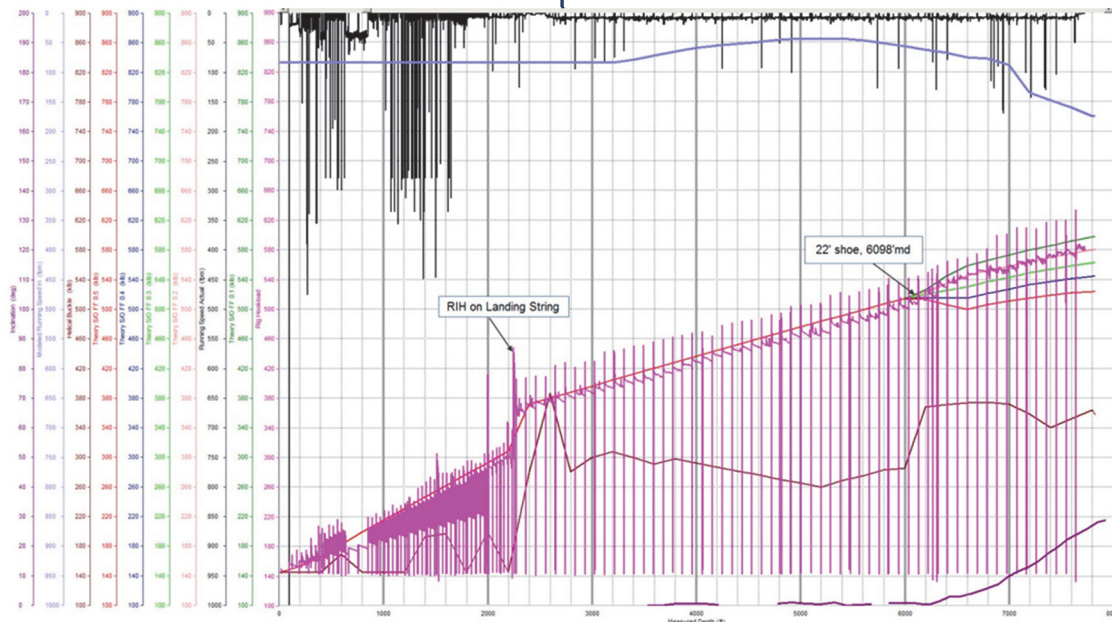
Operator experiences increased risk of casing running difficulties with large diameter casing run through build sections and into higher inclination wellbores.

- 18in casing set at 29° inclination.
- Max DLS of 2.7°/100ft.
- 2000ft of open hole with very soft formation.

WWT FlexShoe Guides Casing to Bottom Using a FLX-1800, the casing was run to bottom without any significant drag. The cement job and drill out were also completed without any significant difficulties.



Location: Gulf of Mexico
 Well Type: Deepwater
 Objective: Run Casing in High Inclination Wellbore
 Solution: WWT FlexShoe
 Results: Casing run to bottom with no significant drag.



WWT Non-Rotating Protectors
www.wwtinternational.com